

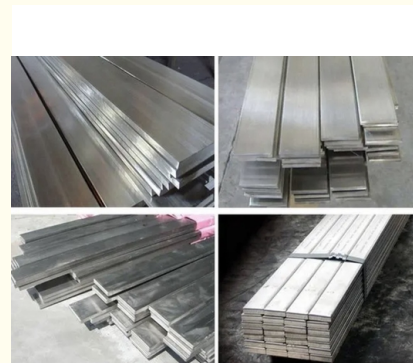


Hot Sale 04L 316L 410 430 416 904L polished Precision Ground Stainless Steel Flat Bar

Our Product Introduction

Basic Information

- Place of Origin: wuxi
- Brand Name: tai-steel
- Certification: ISO9001
- Model Number: 201 202 304 304L 316 316L 317L 347H
- Minimum Order Quantity: 10 Tons
- Price: \$2,300/Tons 10-999 Tons
- Packaging Details: Wooden pallet , Wooden box or according to customer's request
- Delivery Time: 8-14 days
- Payment Terms: L/C, T/T
- Supply Ability: 20000 Ton/Tons per Month



Product Specification

- Tolerance: $\pm 1\%$
- Technique: Cold Rolled Hot Rolled
- Delivery Time: 8-14 Days
- Application: Construction , Decoration, Industry
- Stock: YES, In Stock
- Price Term: CIF CFR FOB EX-WORK
- Highlight: 0.47x1200mm 6063 aluminum alloy,
0.47x1200mm prepainted aluminum coil,
0.47x1200mm aluminium sheet coil

Product Description

Specification

Product Name	Stainless steel flat bar		
Standard	ASTM A479,ASTM A276,ASTM A484, ASTM A582, ASME SA276, ASME SA484, GB/T1220, GB4226, etc.		
Material	201,202,304,304L,316,316L,317L,347H,310S,309S,430,904L,2205,2507,2101		
Specifications	Round bar	Diameter:0.1~500mm	
	Hexagonal bar	Size: 2mm~100mm	
	Flat bar	Thickness	0.3~200mm
		Width	1~2500mm
	Square bar	Size: 1mm*1mm~800mm*800mm	
Length	2m, 5.8m, 6m, or as required.		
Surface	Black, peeled, polishing, bright, sand blast, hair line, etc.		
Price Term	Ex-work, FOB, CFR, CIF, etc.		
Export to	Singapore, Canada, Indonesia, Korea, UK, Thailand, Peru, Saudi Arabia, Vietnam, Ukraine, Brazil, South Africa, etc.		
Delivery Time	Standard size is in stock,prompt delivery or as order's quantity.		
Package	Export standard package, bundled or be required. The inner size of container is below: 20ft GP: 5.9m(length) x 2.13m(width) x 2.18m(high)about 24-26CBM 40ft GP: 11.8m(length) x 2.13m(width) x 2.18m(high) about 54CBM 40ft HG: 11.8m(length) x 2.13m(width) x 2.72m(high) about 68CBM		

Products Description

We can deliver your customised goods to the specified place on time and on schedule in a number of ways. The prerequisite is a detailed description to avoid errors.



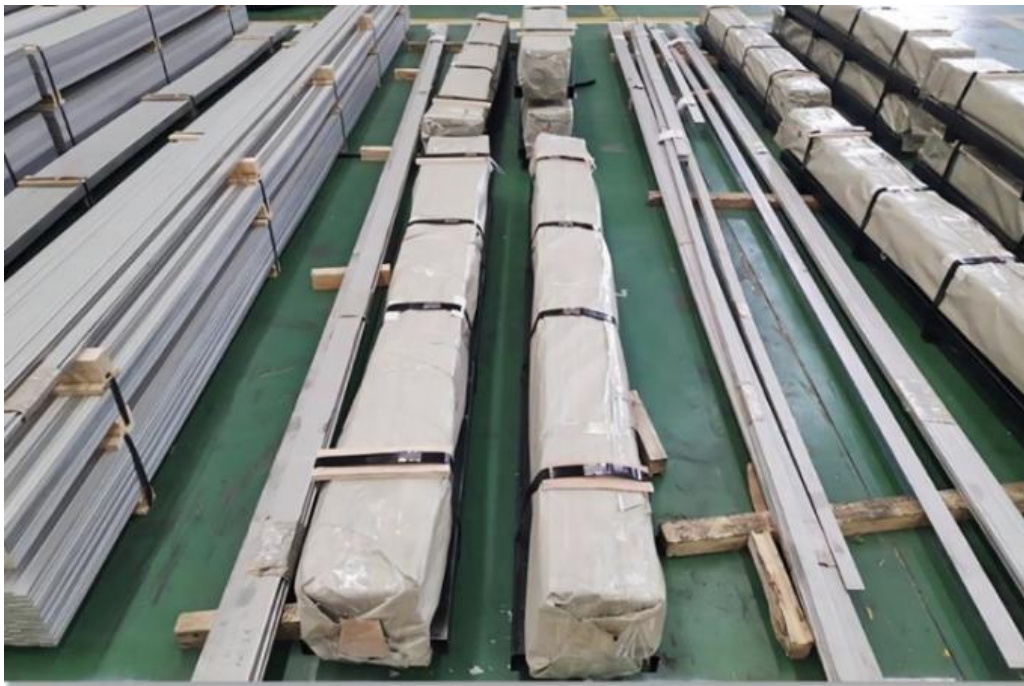
Product application

We will continue to provide customers with first-class services, first-class products and strive to do the best. Create value for the customer.

PROVIDE QUALITY PRODUCTS



Packaging & Delivery



Company Profile

Wuxi Taiding stainless steel Co., Ltd., is a stainless steel/carbon steel/alloy company engaged in the researching, stocking, sale and service of stainless steel sheet, stainless steel pipes, stainless steel profile, stainless steel bar, stainless steel coils. Carbon steel, alloy steel products. We are located in China with convenient transportation access. Our factory has rich experience in selling, stocking as we are engaged in domestic market and foreign market. Our company is the collection of selling and stocking. And now we have stock over 2000 tons with more than 800 kinds of specifications in our warehouse. Dedicated to strict quality control and thoughtful customer service, our experienced staff members are always available to discuss your requirements and ensure full customer satisfaction. Selling well in all cities and provinces around China.

Our company is sincerely willing to cooperate with enterprises from all over the world in order to realize a win-win situation since the trend of economic globalization has developed with an irresistible force.



Production equipment

STAINLESS STEEL SHEET



Workshop

STAINLESS STEEL COIL



Stock

STAINLESS STEEL PRODUCTS

Transport

We support the three major transportation by sea, land and air to ensure that your goods can arrive on time.



How much weight can a flat bar hold?

Strip & flat bars can handle weight per foot from 0.425 all the up to 81.600. The bars may be solid or punctuated by holes, slots or other cutouts for assembly.



Wuxi TAIDING Stainless Steel Co., Ltd.



+86 15850543668



vincentfang@taidingss.com



stainless-steel-sheetcoil.com

28 Nongshi Road, Xishan District, Wuxi City, Jiangsu Province, China