

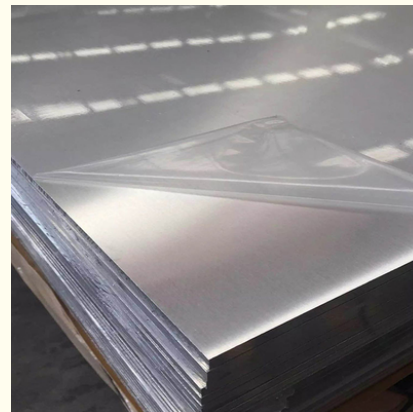
Custom Factory Price 304 316 419 416 Cold Rolled Stainless Steel Decorative Sheet Metal 4x8

Our Product Introduction

for more products please visit us on stainless-steel-sheetcoil.com

Basic Information

- Place of Origin: wuxi
- Brand Name: tai-steel
- Certification: ISO9001
- Model Number: TAI-2
- Minimum Order Quantity: 10 Tons
- Price: \$1,200.00/Tons 10-99 Tons
- Packaging Details: Wooden pallet , Wooden box or according to customer's request.
- Delivery Time: 8-14 days
- Payment Terms: L/C, T/T
- Supply Ability: 50000 Ton/Tons per Month

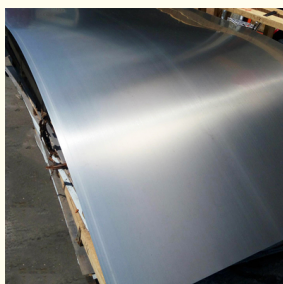
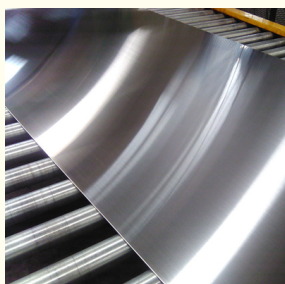


Product Specification

- Type: Plate, Sheet
- Surface: A/2B/NO.1/NO.3/NO.4/8K/HL/2D/1D
- Price Term: CIF CFR FOB EX-WORK
- Payment Term: 30%TT+70%TT / LC
- Packing: Standard Sea-worthy Packing
- Width: 1000-2000mm Or Customized
- Highlight: alloy b2 hastelloy, hastelloy b2, hastelloy c276 alloy



More Images



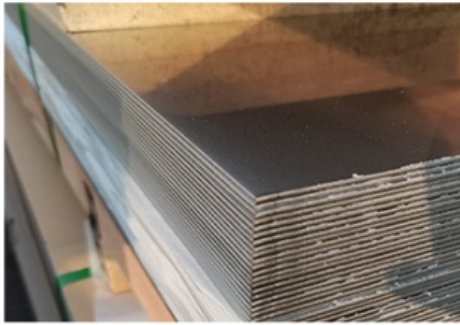
Product Description

Specification

Stainless Steel Decorative Sheet/Plate	
Thickness	0.3-100mm
Standard	mainly 201, 202, 304, 304L, 304H, 316, 316L, 316Ti, 2205, 330, 630, 660, 409L, 321, 310S, 410, 416, 410S, 430, 347H, 2Cr13, 3Cr13 etc 300series: 301, 302, 303, 304, 304L, 309, 309s, 310, 310S, 316, 316L, 316Ti, 317L, 321, 347 200series: 201, 202, 202cu, 204 400series: 409, 409L, 410, 420, 430, 431, 439, 440, 441, 444 Others: 2205, 2507, 2906, 330, 660, 630, 631, 17-4ph, 17-7ph, S31803, 904L, etc Duplex stainless steel: S22053, S25073, S22253, S31803, S32205, S32304 Special Stainless Steel: 904L, 347/347H, 317/317L, 316Ti, 254Mo
Width	600mm, 1000mm, 1219mm, 1500mm, 1800mm, 2000mm, 2500mm, 3000mm, 3500mm, etc
Length	2000mm, 2440mm, 3000mm, 5800mm, 6000mm, etc
Surface	BA/2B/NO.1/NO.4/8K/HL
Quality test	we can offer MTC (mill test certificate)
Payment terms	L/C T/T (30% in advance)
Stock or not	Enough stock
Sample	Provided Freely
Container Size	20ft GP: 5898mm(Length)x2352mm(Width)x2393mm(High) 40ft GP: 12032mm(Length)x2352mm(Width)x2393mm(High) 40ft HC: 12032mm(Length)x2352mm(Width)x2698mm(High)
Delivery time	Within 7-10 Working Days

Product Description

PRODUCT DETAIL



Product name: Cold rolled flat plate (sheet)
Size: 1000 * 2000, 1219 * 2438
1219 * 3048, 1500 * 3000
can be flattened according to the length
required by customers.
Surface: ordinary 2B surface (original bright
surface)

Product name: Thickness of hot rolled
sheet (medium plate)
Thickness: 3MM~200MM 1500*6000
1250 * 6000, 1800 * 6000,
The length can be determined according to
customer requirements, and the cutting



Product name: Brushed stainless steel sheet
Thickness: 0.3MM~16MM
Surface: ordinary wire drawing, short wire,
filament, oil grinding wire drawing, anti
fingerprint treatment (No.4 surface)

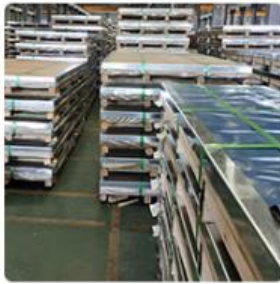
Product name: mirror stainless steel sheet
Thickness: 0.3MM~16MM
Surface: 300 mesh polishing, 400 mesh, 6K
polishing, 8K polishing, precision 8K polishing,
anti fingerprint treatment (No. 8 surface)



Packing & Delivery

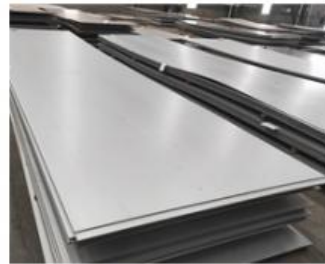
PACKAGING

Packaging



We have develop clients all round the world ,our products are widely used in industry in USA ,Germany ,India ,Iran , Dubai , Iraq , Vietnam , Ireland , Singapore ,and so on .The specifications are complete and the price is favorable. Our company can order various non-standard specifications on behalf of customers. , special material steel products, can be delivered to your door, ordering quickly.

Inventory display



Company Profile



Wuxi taiding stainless steel Co., Ltd., is a stainless steel/carbon steel/alloy company engaged in the researching, stocking, sale and service of stainless steel sheet, stainless steel pipes, stainless steel profile, stainless steel bar, stainless steel coils. Carbon steel, alloy steel products. We are located in China with convenient transportation access. Our factory has rich experience in selling, stocking as we are engaged in domestic market and foreign market. Our company is the collection of selling and stocking. And now we have stock over 2000 tons with more than 800 kinds of specifications in our warehouse. Dedicated to strict quality control and thoughtful customer service, our experienced staff members are always available to discuss your requirements and ensure full customer satisfaction. Selling well in all cities and provinces around China. Our company is sincerely willing to cooperate with enterprises from all over the world in order to realize a win-win situation since the trend of economic globalization has developed with anirresistible force.



Production equipment

STAINLESS STEEL SHEET



Stock

STAINLESS STEEL PRODUCTS

Workshop

STAINLESS STEEL COIL



Application

Application place



Cooperation

// COOPERATION BRAND //

PARTNER

SHANDONG STEEL GROUP RIZHAO BRANCH, LAIGANG STEEL, RIZHAO STEEL AND ANGANG GROUP, ANSHAN STEEL, BAOGANG STEEL GROUP, PUYANG STEEL ETC.



Wuxi TAIDING Stainless Steel Co., Ltd.

+86 15850543668

vincentfang@taidingss.com

stainless-steelsheetcoil.com

28 Nongshi Road, Xishan District, Wuxi City, Jiangsu Province, China